

# Study Unit 4

## EDU 4. Special Needs Education

### Unit Overview

#### Unit Content

This unit will cover;

1. Basic concepts in Special Education
2. Education of the Intellectually Retarded
3. Education of the Hearing Impaired and Communication Disorders
4. Education of the Physically and Health Impaired and Learning Disabled
5. Gifted and Talented Development
6. Education of the Visually impaired

#### Study Unit Duration

This unit will take you a minimum of 3 hours'.

Two to Three hours may however be spent on revision.

Persons with special needs are found in all societies of the world. Within and outside our different institutions of learning, we find learners with special needs that require unique responses to their education. This session will introduce you to fundamentals of special needs education that will enable you to obtain key knowledge about the concept of inclusive education.

### Study Unit 4 Learning Objectives

By the end of this unit, you should be able to:

1. Explain what Special Education And Learning is all around
2. Determine the partnership in between General Education as well as Special Education
3. Identify the importance of study studies in the area of Special Education and learning
4. Determine the value of information interaction Modern technology to Unique Demands Education
5. Identify various categories of Youngsters with Pundit Retarded and approaches of enlightening them
6. Determine causes and attributes of Students with hearing Disability as well as Methods of educating them.
7. Identify the features of talented and talented youngsters
8. Design a proper educational program for the talented as well as gifted children
9. Identify children with aesthetic impairment in the classroom
10. Identify the significance of Rehabilitation to Unique Requirements Education And Learning



## What is Special Education?

- (1) ***“Specially designed instruction”***- It’s a customized instructional program
- (2) ***“at no cost to parents”***-It’s free, regardless of the disability
- (3) ***“to meet the unique needs of a child”***-Each individual receiving special education is different and has different needs.

**BASIC CONCEPTS IN SPECIAL EDUCATION AND LEARNING**

## **Viewpoints on the past and the future**

### **Pre-Christian Age**

This took location prior to the arrival of Christianity. The "Dark Ages" might be related to the existing duration. Disadvantaged as well as impoverished youngsters with unique demands suffered during this amount of time. It was a time of lack of knowledge and superstition that permeated the age. Children with unique needs were neglected or offered with specific instructional needs during this time around duration.

### **The Age of Christ**

It was a moment when the importance of love as well as selflessness was highlighted. In the Christian faith, the focus was much more on common love than on vanity. Making use of the expression "as much as ye had actually done it unto among these brethren, ye have done it to me," Jesus showed that love for one an additional was warranted. Individuals with impairments began to be dealt with much more humanely in a number of components of the globe throughout this period.

### **End of the Christian Age**

Early in the 18th century, schools for youngsters with special requirements were developed for the very first time. Physicians in Europe were the key proponents of special education. The contributions of Jean Itard, Edward Seguin, Valentine Howe, Thomas Hopkins Gallaudet, Samuel Griailey Howe, as well as Samuel Griailey Howe to unique demands education and learning were considerable.

### **Two kinds of education: general and special**

The primary objective of education and learning is to assist a youngster grow in ethical, physical, as well as intellectual dimensions. Kids with unique understanding challenges are the emphasis of unique education. According to Obani (2004 ), kids with impairments must receive special education that exceeds and also beyond the normal college system's provisions as well as procedures in order to aid them learn effectively. The emphasis of unique education and learning gets on the learner, not the material.

### **Special education terms**

Name	Affected Area(s)	Characteristics
Auditory Processing Disorder	Processing or interpretation of sound in the brain	<ul style="list-style-type: none"> <li>• Difficulty making sense of sounds</li> <li>• Problems with blocking out background noise</li> <li>• Trouble telling where sound is coming from</li> </ul>
Dyscalculia	Numbers and mathematics skills	<ul style="list-style-type: none"> <li>• Difficulty learning math facts such as symbols and place value</li> <li>• Problems with counting</li> <li>• Trouble telling time</li> </ul>
Dysgraphia	Fine motor skills and handwriting	<ul style="list-style-type: none"> <li>• Illegible handwriting</li> <li>• Inconsistent use of letters (e.g., lowercase and capital)</li> <li>• Difficulty with spatial planning on paper</li> </ul>
Dyslexia	Reading and language processing skills	<ul style="list-style-type: none"> <li>• Reading slowly</li> <li>• Difficulty decoding words, especially the order of letters</li> <li>• Problems recalling known words</li> </ul>
Language Processing Disorder	Language processing skills	<ul style="list-style-type: none"> <li>• Difficulty understanding meaning of spoken language</li> <li>• Poor reading comprehension</li> <li>• Problems with verbal expression</li> </ul>
Nonverbal Learning Disabilities	Nonverbal skills such as motor, visual-spatial, and social skills	<ul style="list-style-type: none"> <li>• Difficulty interpreting body language or facial expressions</li> <li>• Poor motor coordination</li> <li>• Trouble with multistep instructions</li> </ul>
Visual Perceptual/Visual Motor Deficit	Interpreting visual information or drawing	<ul style="list-style-type: none"> <li>• Mistakes in writing, such as reversing letters</li> <li>• Too-tight grip on pencil or other writing tool</li> <li>• Poor hand/eye coordination</li> </ul>


Source: Learning Disabilities Association of America, 2017; <https://ldaamerica.org/types-of-learning-disabilities/>

### **Education customized to every student's requirements.**

Subsequently, each child is distinct as well as has a different knowing pace. This is true for children with handicaps as well. Kid's individual requirements, unique demands, challenges, and unique instructional needs are all taken into account while making a customized curriculum.

Training goals, present academic success, special education and learning and relevant solutions as well as the standards for determining the success of mentor purposes should be included in a specific instructional program. Impaired trainees require to be dealt with as people and given unique consideration. Students with impairments can take advantage of the following resources:

When it comes to young kids, the Individualized Family Service Plan (IFSP) as showed below; SPECIAL REQUIREMENTS EDUCATION RESEARCH IS CONTINUING.



# A Definition of Research

---

“the careful study that is done to find and report new knowledge about something”

*Merrriam-Webster, 2015*

## Research is a process

- Kinds of Special Education Research Studies.
- Research study Funded by Others.
- Working as a consultant.
- Utilizing an expert's know-how for a certain job.

**NB.** Research on Special Needs Is Very Important Educators are constantly seeking new ways to enhance the top quality of education, such as in the areas of teaching, classroom monitoring and also psychological diagnoses.

According to Adebisi (1998 ), special education and learning research study can be made use of to:

- ( a) Examine the efficiency of a program for trainees with disabilities.
- b) Assess the potential effects of a certain choice.

(c) Examine the veracity of numerous special education and learning ideas.

### **Barriers to Unique Education and Learning Research.**

The following are some of the troubles scientists in the area of special education and learning face:

- Custom as well as Culture.

It is hard to do research in Unique Education and learning in Africa as a result of anti-research social taboos and also customs. "As it remained in the start, so it is as well as so it will be." This is the idea of lots of cultures.

- We are what we believe.

Your elevation is a direct result of your stance. Study activities in special education are also a consider the lack of progression in the area. Many emerging countries, on the other hand, don't comprehend why they're racing to reach abundant countries so rapidly.

- Questions of principles.

There are many sort of values. Research study is not an exception to this regulation. There are a lot of scientists available who don't bother to play by the policies. If, as an example, a country's populace of persons with specials needs is not publicly known, scientists are most likely ahead up with inflated numbers, and also therefore their conclusions may be re-examined.

- Absence of resources.

Many researchers as well as their jobs are prevented by not enough resources. The prices of carrying out study in the area of unique education are high. Many unique education and learning research studies take years to finish since of an absence of tools to construct the information required.

- Missing Out On or Incomplete Information.

The lack of a specialized library or data bank makes it tough to do research in special education and learning. People with impairments, as an example, are not included in

any type of statistics. Strengthening Special education and learning research studies are now being performed.

### **Elements in study.**

The scientist should have self-assurance as well as recognize precisely what, how, and why they are performing their research study. They should be able to focus. If you want to study, you require to be certified.

Non-governmental companies, foundations, kind companies and also the federal government must all contribute economically to make sure the long-lasting success of the company.

### **Elements of culture.**

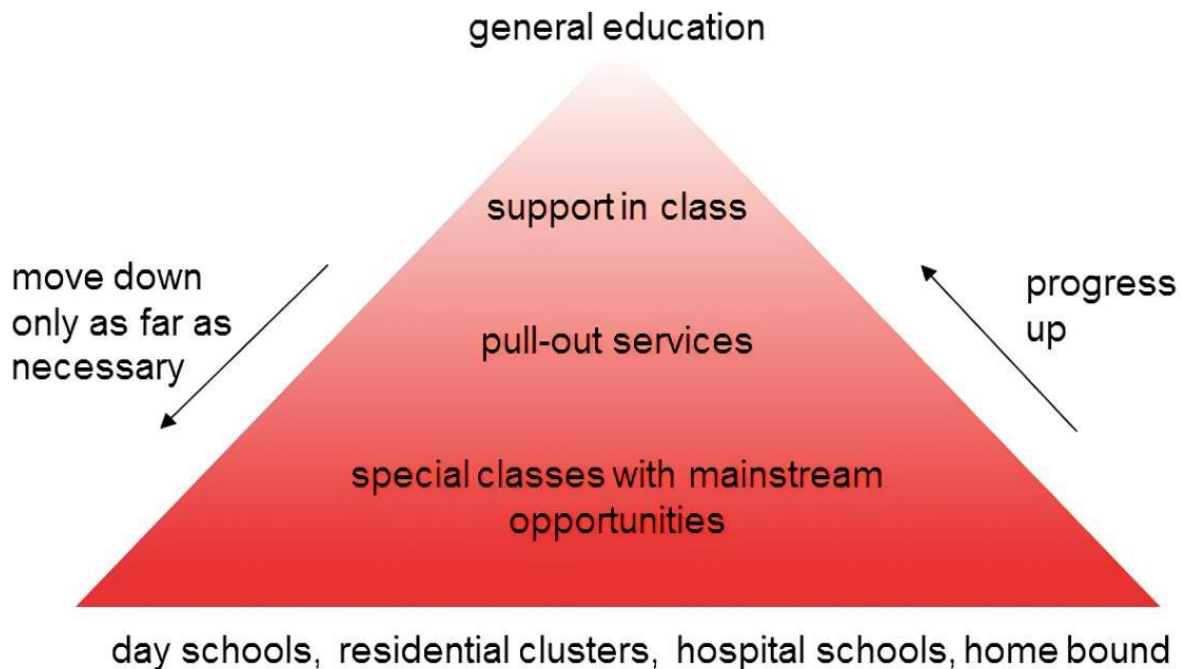
Clearing up the probe must be done in the general public eye. When asked to submit studies on their impaired youngsters, some parents exist or conceal the fact that their children are in reality disabled. It is possible for culture to get rid of tradition-based and also social challenges to scientific research study by holding workshops, workshops, as well as seminars.

Variables in documents.

The research must be appropriately as well as correctly recorded. Workshops must be held on the appropriate storage of files as well as various other documents.

### **Educational Services for Trainees with Impairments.**

## The Continuum of Special Education Services



### **What is a unique education program?**

Those with special demands When it involves enlightening pupils with different specials needs or discovering issues in a normal school establishing there is nothing more difficult than making fundamental modifications to the educational program, techniques as well as products in order to much better accommodate their individual knowing needs (Obani, 2006). Youngsters with disabilities can profit from making use of modern technology in the class.

### **Technology in Special Education**

It is the application of technology to details management, which includes the generation, storage space, retrieval and also transmission of information (Maduagwu and also Ajobiewe, 2006). Communications modern technology (ICT), that includes telephone,

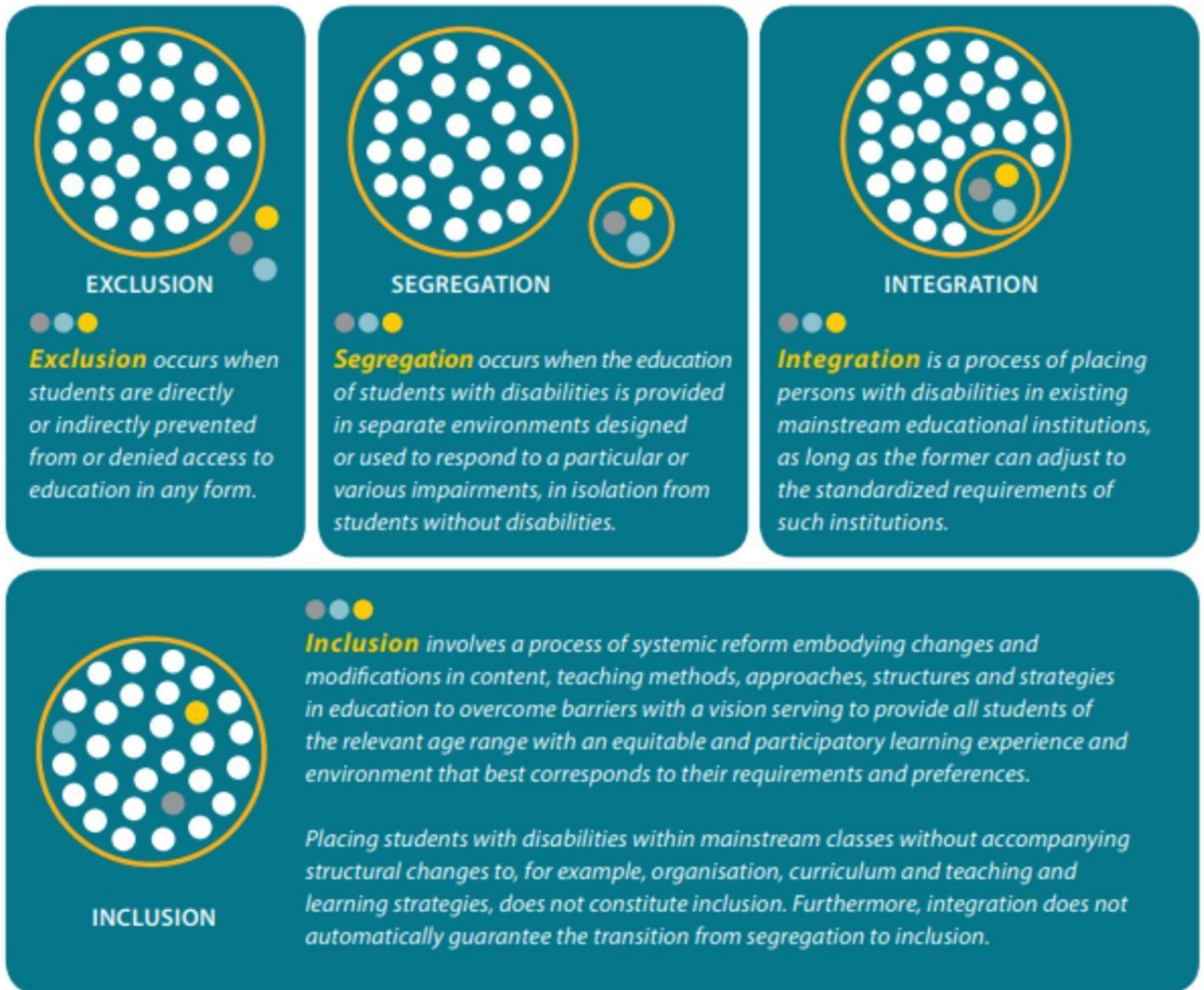


cable television, satellite as well as television communications along with computers as well as the Internet, consists of the application of details and also communication modern technology in all areas as well as social teams (old or young, male or woman).

Internet.

Due to the fact that of the Net's worldwide "wireless network," individuals can interact and also communicate with one another regardless of how much apart they live. To begin with, the Net was created to make it simpler for individuals to interact with another. The academic applications of ICT.

ISSUES IN CONTEMPORARY SNE.



Source: United Nations Committee on the Rights of Persons with Disabilities General Comment No. 4 (<http://www.ohchr.org/Documents/HRBodies/CRPD/GC/RighttoEducation/CRPD-C-GC-4.doc>)

### Reforming Special Education and Learning.

There has been a great deal of discuss school reform given that the early 1980s, but special education has actually only been taken on in current years. A variety of worries will certainly be influenced in the early 21st century:.

a) A Full Variety Of Positions.

It was explained that considering that 1975, the regulation has actually mandated a continuum of internships that consists of: (1) full- time in a basic education classroom;

(2) part-time in an unique education and learning space; (3) full time in a standout, standout unique demands class; (4) in a separate unique requirements school; (5) in a residential center; (6) in the health center. Some trainees with problems can gain from a permanent general education and learning teaching fellowship, however not all. According to academic plan, each student should be assessed as well as put on his or her own. behavioral or scholastic, then a typical academic class can supply. As a result, students with serious psychological or behavior handicaps may disrupt the education of other students in a basic education and learning classroom by monopolizing an educator's focus or positioning their peers while thinking that trainees are shown in the least limiting atmosphere with their peers should. There are lots of people who think it is morally and also lawfully wrong to place all trainees in the exact same classroom, despite their particular needs.

Exists a problem with terminology?

Experts and also parents alike are concerned about the naming and also categorization of impairments. Some argue that classifying students is unneeded. Learning impairment, deafness, as well as autism are seen as an usual ground for scientists, parents, and also specialists to talk about methods and share understanding regarding certain disabilities in order to help teachers and also administrators get ready for proper education and learning and give trainees with suitable education, according to supporters. In order to effectively manage their budgets, colleges must have the ability to discuss just how they presently use their assigned quantities and also why they need added funding.

According to doubters, identifying a student with a special needs permanently stigmatizes them. Because of this, they think that managers as well as trainers reduce their criteria for trainees that have actually been identified as having unique requirements, resulting in an unlimited cycle of underachievement. In comparison to non-categorical tagging, an extension of the topic of tagging is categorical. The specific

classification is made use of in nationwide education policy to recognize a handicap that drops under a specific category. Students with handicaps or developing retardation can be identified by non-categorical labels that do not identify the certain special needs. Allowing even more time to view and examine a young person before establishing the kind of special needs is a benefit of non-descript labeling. The advantages of categorical labeling are shed as an outcome of this approach of identifying mistake prevention.

**Handicaps are broken down right into various classifications.**



Much of these children necessitate the presence of teachers that are experienced with assistive and also clinical innovation. Several of these kids, especially those that are signed up generally education and learning, require the aid of a course aide on a normal basis.

## **The Classroom Setup.**

Early intervention and modern technology, transition, and also prevention strategies are three unique education fads that are having a big influence on the classroom atmosphere.

1. Preventative measures and early treatment. It's not a brand-new principle, yet early treatment and impairment prevention are becoming extra considerable. In addition to the lasting benefits to kids, very early intervention and avoidance saves cash by avoiding the requirement for costly treatments later on. Teacher-led or kid-centered? These are two vital factors to consider to take into consideration when making a decision just how to intervene with a child with autism. Additionally, obstacles to very early treatment and also prevention are presently being worked to get rid of.

2. Science and also modern technology. Significantly, modern technology permeates our daily lives as well as enters the classroom. Pupils with specials needs can gain from this program. Cochlear implants allow deaf students to hear, while modern-day prostheses (synthetic body parts) allow better mobility and also involvement in education as well as culture.

If you're moving between institutions, this is the time when you're transitioning. Youngsters that have completed very early treatment programs should have transition preparation conferences. Dealing with the Individualized Education And Learning Plan (IEP) for children aged 14 and also over. Even more as well as even more people are preparing for their changes from center school to secondary school or from a limited or closed setting to a less restrictive environment.

Teachers that focus on collaborating with pupils with handicaps.

All undergraduate areas are struggling with a severe absence of special education and learning educators. There is a lack of persons who have completed training for special requirements instructors and are getting in the labor force, in addition to frightening drop-out prices for unique instructors. It is claimed that each special needs classification is basically distinctive from the others and also that instructors need to be highly skilled in that certain area of skills and also constraints.

Additionally, there has actually been a change toward integrating special needs studies into college training courses and also removing them completely. Comparable to the specific versus non-categorical licensing, the factors for as well as versus this instructor training system are similar.

Issues with finances.

In numerous fields of education and learning, there are concerns and conflicts around funding. An abundance of resources is needed to fulfill the needs of special demands education and learning, yet many bad nations are incapable to do so as a result of the considerable monetary barriers they confront.

Education and learning for Students with Pundit Disabilities. Intellectual Special Needs: A Quick Summary.

Many individuals struggle with intellectual handicap, which can be specified as a lack of ability to execute two or even more adaptive activities well prior to the age of 18 years old (AAMR 2002).

Flexible Behavior - Intellectual Performance.

On top of that, there are a number of support group readily available.

Performance of the mind: A tool or test efficient in determining knowledge attributes in their totality has been used, yet the person with intellectual impairment has an intellectual feature that is well low- grade.

Versatility at work: The capacity to adjust to one's atmosphere is all that is required here. In daily life, everybody involves in this kind of activity. Since they do not have the abilities needed for a particular scenario, intellectually impaired people and also others might struggle with this.

In order to aid you out, we've assembled It refers social recognition. The capacity to understand and react to the social hints and also signs offered by various other people. In order to aid persons with intellectual disabilities, particularly those with serious as well as deep intellectual specials needs, there needs to be support in all areas.

Intellectual retardation is divided right into 4 classifications:.

The level of disability, medical signs, instructional goal, as well as historical beliefs and also causes are all considered when determining youngsters with intellectual disabilities. Specials needs in kids can be seen from various perspectives. This is a list of traditional, educational, and also medical degrees that are offered.

In the past, individuals were categorized according to their education degree.

IQ 025: Idiot Profound/ Serious Mental problems that is completely reliant. Clients with intellectual specials needs are classified as adheres to.

Down disorder, cridu, hydrocephalus, and microcephaly chat all loss under the group of cretinism.

### **Factors Adding to Mental Disease.**

There are numerous aspects that contribute to intellectual special needs, some of which are recognized, yet others that continue to be an enigma to unique education scientists.



According to the regularity with which they happen, intellectual handicap triggers can be divided right into several classifications.

Detailed listed below are the information:.

Ahead of fertilization (before birth) After the birth of a youngster (during birth) After the birth of a youngster (after birth).

**Several kinds of prenatal causes exist, including:**

Chromosomal problems: Intellectual impairment can be passed down by means of households. People with intellectual disabilities may be birthed with hereditary conditions like Down disorder, Breakable X disorder or the Prader-Willi disorder; these are just a couple of examples.

Metabolic Problems (Genetic): The kid is born with an absence of enzymes, such as amino vitamins, carbohydrates, and acids. Body parts that may cause injury to the brain.

Deficiencies in the growth of the mind. Among them: It's feasible to have both hydrocephalus I and also microcephaly (ii).

In hydrocephalus, the cerebrospinal liquid is under excessive pressure and also causes the head to swell. A problem called microcephaly causes a conical head to create.

In regards to (e) the setting, Pregnancy as well as the fetus can be influenced by a wide variety of ecological impacts. - Mother's malnourishment - Alcohol consumption throughout pregnancy - Too much radiation exposure while pregnant - Mother's rubella are some examples of these aspects.

Intellectual retardation can be split into two groups: postnatal as well as prenatal (2 ).

**Causes of prenatal fatality (during childbirth).**

- 1 . Use of tweezers as a root cause of perinatal problems.
- 2 . Obstruction in the supply of oxygen.

## **ROOT CAUSES OF POSTNATAL INFECTION.**

1. After-birth Biological Elements.
2. As a result of postpartum psychosocial aspects,.

These consist of ailment, condition, and also malnutrition in the postnatal period, in addition to undesirable environmental consider the postnatal duration.

3. Unassimilated environment.

Psychologically retarded youngsters characteristics.

Certain behavioral qualities are common in kids who are intellectually tested. Pundit and social elements have been categorized.

## **Characteristics of the Intellectually disables.**

Trainees with intellectual problems have the adhering to intellectual characteristics: Having a hard time bearing in mind as well as learning They have a tough time understanding the idea of abstraction.

When it comes to easy points, they have a different viewpoint.

Drawbacks: It's tough for them to monitor ideas, get and also transfer them, and also employ abstraction in issue fixing Failure to move your experiences to various contexts Negative aspect:.

Analysis, mathematics, and creating are all techniques that are hard for them to acquire without a whole lot of repeating.

A person with intellectual impairment is incapable to gain from things, events, or situations on his or her very own.

Being not able to leave a class for lengthy durations of time due to lack of ability to proceed.

It is tough for them to research college subjects like maths, creating, and reading as a result of their absence of self- confidence.

- He is not able to take part in group tasks due to the interpersonal connections that exist in groups. Due to the fact that of the method their social connections are affected by their repetitious characteristics, - Tolerance isn't a big problem for them.
- They are illiterate in the subject matter. The inability to adhere to directions as well as the lack of ability to connect properly.

### **Finding intellectually deferred children.**

Determining intellectually deferred youngsters as very early as feasible, particularly in the preschool years, is the best method to guarantee that they have the ability to talk and relocate as quickly as their peers. In order to assist course educators identify trainees with intellectual specials needs, it is very important to very first specify what such trainees are. The residential or commercial properties listed here can be damaged down into three distinctive groups.

### **Troubles with**

**cognition.** □ Failure to adapt.

- The failure to change one's activities.
- To be able to keep oneself, one should count on others.

### **Educating Techniques for Students with Special Needs**

## The Ten Qualities of an Inclusive Teacher

The most powerful catalyst for my child's inclusion has always been the teacher's attitude and skills. I have noticed 10 key qualities.

Beliefs and Values	<p><b>1</b> Possess an unquestioning belief that my child has a right to be in our College for the full day of every day, every week from Prep to Graduation.</p>	<p><b>2</b> See my child as a human being, a child with thoughts and feelings; she is always the focus, not what is going on for them; believe my daughter will be socially and academically included, and there is no doubt that she will achieve academically, will be valued by those around her, and will make authentic friendships.</p>	<p><b>3</b> See my child's future as 'not pre-written', without any ceiling created by diagnosis, but rather based in her own unique interests, skills and talents; have high expectations of what's possible.</p>
Skills and Approach as a Quality Teacher	<p><b>4</b> Passionate in knowing and teaching every student in their class, including my daughter, and see this simply as part of their job.</p>	<p><b>5</b> Flexible and creative in finding ways of getting my child to demonstrate what she has learnt.</p>	<p><b>6</b> Passionate about learning new things, and embrace change.</p>
Partnership, Communication and Collaboration	<p><b>7</b> Use appropriate person-first language all the time, if they feel the need to use diagnostic labels at all.</p>	<p><b>8</b> Love sharing positives and see that this builds a strong working relationship.</p>	<p><b>9</b> Highly value my opinion as Mum, and collaboration with allied health professionals.</p>
			<p><b>10</b> Possess excellent communication skills, and are always solution-focused.</p>

Authored by **Lindie Brengman**—A parent of a student with a disability and member of the Queensland Collective for Inclusive Education.

This piece was written by Lindie for her presentation at the Inclusive Education Forum, QUT in 2017.



The **Queensland Collective for Inclusive Education** are a group of families who promote inclusive lives for our children with disability and work together to make inclusive schools a reality for all.

The **Ten Qualities of an Inclusive Teacher** by Lindie Brengman is an example of the work in the Professional Engagement Team by a QCIE member.

Lindie has developed a presentation which accompanies this document and she has delivered this at events such as at the Illume Learning Conference and at universities such as the QUT Inclusive Education Forum.

## Nine Types of Curriculum Adaptations

<p style="text-align: center;"><b>Quantity * ●</b></p> <p>Adapt the number of items that the learner is expected to learn or number of activities student will complete prior to assessment for mastery.</p> <p><i>For example:</i> Reduce the number of social studies terms a learner must learn at any one time. Add more practice activities or worksheets.</p>	<p style="text-align: center;"><b>Time *</b></p> <p>Adapt the time allotted and allowed for learning, task completion, or testing.</p> <p><i>For example:</i> Individualize a timeline for completing a task; pace learning differently (increase or decrease) for some learners.</p>	<p style="text-align: center;"><b>Level of Support *</b></p> <p>Increase the amount of personal assistance to keep the student on task or to reinforce or prompt use of specific skills. Enhance adult-student relationship; use physical space and environmental structure.</p> <p><i>For example:</i> Assign peer buddies, teaching assistants, peer tutors, or cross-age tutors. Specify how to interact with the student or how to structure the environment.</p>
<p style="text-align: center;"><b>Input *</b></p> <p>Adapt the way instruction is delivered to the learner.</p> <p><i>For example:</i> Use different visual aids, enlarge text, plan more concrete examples, provide hands-on activities, place students in cooperative groups, pre-teach key concepts or terms before the lesson.</p>	<p style="text-align: center;"><b>Difficulty * ●</b></p> <p>Adapt the skill level, problem type, or the rules on how the learner may approach the work.</p> <p><i>For example:</i> Allow the use of a calculator to figure math problems; simplify task directions; change rules to accommodate learner needs.</p>	<p style="text-align: center;"><b>Output *</b></p> <p>Adapt how the student can respond to instruction.</p> <p><i>For example:</i> Instead of answering questions in writing, allow a verbal response, use a communication book for some students, allow students to show knowledge with hands on materials.</p>
<p style="text-align: center;"><b>Participation *</b></p> <p>Adapt the extent to which a learner is actively involved in the task.</p> <p><i>For example:</i> In geography, have a student hold the globe, while others point out locations. Ask the student to lead a group. Have the student turn the pages while sitting on your lap (kindergarten).</p>	<p style="text-align: center;"><b>Alternate Goals ●</b></p> <p>Adapt the goals or outcome expectations while using the same materials. When routinely utilized, this is only for students with moderate to severe disabilities.</p> <p><i>For example:</i> In a social studies lesson, expect a student to be able to locate the colors of the states on a map, while other students learn to locate each state and name the capital.</p>	<p style="text-align: center;"><b>Substitute Curriculum ●</b> <i>Sometimes called "functional curriculum"</i></p> <p>Provide different instruction and materials to meet a learner's individual goals. When routinely utilized, this is only for students with moderate to severe disabilities.</p> <p><i>For example:</i> During a language lesson a student is learning toileting skills with an aide.</p>

\* *This adaptation is an accommodation if the student can demonstrate mastery of the standard on an assessment.* The key concept is: Will the student ultimately master the same material but demonstrate that mastery in alternate ways or with alternate supports? If standards are not fundamentally or substantially altered, then this adaptation is an accommodation to a learning or performance difference.

● *This adaptation is a modification if the student will not demonstrate mastery of the standard on an assessment.* If routinely utilized, these adaptations are modifications and require individualized goals and assessment.

Substantially altered by Diana Browning Wright with permission from Jeff Sprague, Ph.D. from an original by DeSchenes, C., Ebeling, D., & Sprague, J. (1994). *Adapting Curriculum & Instruction in Inclusive Classrooms: A Teachers Desk Reference*. ISDD-CSCI Publication.

Diana Browning Wright, *Teaching & Learning 2005* **NineTypes\_inst05**

### WITH INTERACTION WITH HEARING DISABILITIES

There are 4 categories of hearing impairment:

- (a) individuals with light hearing loss
- (b) individuals with mild hearing loss;
- (c) people with modest listening to loss;
- (d) people with serious hearing loss; as well as
- (e) people with extensive hearing loss (Aang, 1992).

The World Health Organization WHO (2005) specifies hearing disability as a partial or total loss of hearing in one or both ears, as defined by the that.

There are 2 classifications of hearing loss under the umbrella term "hearing problems," based mainly on the severity of the disability. The tough of hearing and the deaf come under these categories.

As an outcome, a kid's scholastic performance may be hurt by listening to disability, whether it is long-term or variable.

Individuals with hearing loss, whether they use listening to aids, loss under this classification.

They are likewise recognized as those who have a partial loss of hearing (Mba 1995).

The term "deaf" refers to youngsters who are unable to listen to noises in all or over a specific level. Somebody who is deaf can be defined as someone who is not able to comprehend speech without the usage of a listening devices. Hearing loss factors that ought to be considered

- Prenatal (prior to birth), perinatal (during birth), as well as postnatal (after birth) root cause of hearing loss can be classified (after birth).
- The perinatal period starts at fertilization as well as lasts until the infant is birthed. Throughout the very first three months of the unborn child's life, this phase is very essential (trimesters). The fetus is likely to be affected by anything the mom is worried concerning at this moment in the pregnancy. Now, there is a lack of:
  - Absence of prenatal treatment, non-prescription drugs taken by the mommy, the Rh incompatibility element, inheritance, poor nutrition

Mother's or - parental hearing problems or hearing loss can be accidentally given from generation to generation. Otosclerosis, for instance, is among countless acquired conditions and syndromes that can trigger hearing loss.

- Blood compatibility, or RH element, is another name for this. It's a condition in which favorable as well as adverse RH are existing together. When she gives birth to a Rh-positive unborn child, a Rh-negative mommy's antibodies against the unborn child

create. This triggers the mommy to enter into anoxic shock in the mommy's blood. Hearing problems, intellectual incapacity, or spastic paralysis can result from a tear of the feotic blood flow as an outcome of this.

- The fetus can be very deaf at birth as a result of a range of maternal diseases, including rubella, CMV flu, syphilis, and also tremendous coughing.
- Expectant Ladies's Use of Non-Prescription Medicines: The successful birth of a youngster can be helped with by chemical abuse or drug abuse while pregnant. Expectant ladies should avoid chloroquine, quinine, tetracycline, and also other unsafe medicines. Expectant ladies are intended to register in a recognized center and get one browse through to a maternal medical facility where appropriate centers as well as treatment may be offered throughout their pregnancy. Some females do not care about this.
- You and also the unborn child/ youngster might be revealed to unwanted hazards if you have a passive attitude, which might be avoided with proper care and counseling.
- The unborn child in the womb is absolutely based on the mom while pregnant, hence a healthy and balanced diet regimen is advised for the anticipating mommy. Having a child born to a mommy who is undernourished rises the opportunities of the child establishing health issues in the future.

#### Reasons while pregnant

When labor begins, this is how much time it requires to supply a child. A few of the causes that can trigger hearing loss in this stage of labor consist of: Long term labor.

Anoxia created by inadequate oxygen supply; tweezers used improperly. Reasons that emerge postpartum (after the baby is born) Hearing loss can be brought on by a variety of factors, including: Diseases/ Infections: There are a number of conditions as well as infections that may damage the baby after birth. When a person ends up being deaf later on in life, when their language and talking capabilities are fully created, they are stated to be deaf-blind. An individual is birthed with typical hearing, however that hearing is lost as an outcome of health issues or injury.

Presbycusis, or age-related hearing loss, is the gradual loss of hearing that lots of people endure as they age. This remains in part due to the loss of ear cells in the cochlea, which can cause hearing loss. Acoustic injury: this is hearing loss generated by loud noise, which harms hair cells, causing listening to problems.

Specific powerful anti-biotics, antimalarials, as well as hearing- impairing medicines can be discovered.

Trauma to the head that leads to irreversible hearing loss: these are severe head injuries that call for prompt medical attention.

Plans for children with hearing loss in the classroom

In Alade (2005 ), Mykleburst categorized hearing problems according to the adhering to significant variables. Relying on the level of hearing problems, various classifications are used;

Because they lack any kind of feeling of audio, they are completely deaf.

People that are deaf, but can still listen to, are called those who are tough of hearing.

Partly deaf individuals comprise this group. The following is the basis for category:

Obtained hearing loss, or adventitious deafness, is sometimes described as hearing loss. After the advancement of language and speech, this deafness emerged. As a result of disease or injury, the youngster's hearing comes to be ineffective.

Consequently, those who were born deaf loss under the group of genetic deafness. The person has never ever heard any type of significant sounds or found out to talk or compose.

A condition called prelingual hearing problems refers to hearing problems that creates prior to the advancement of language as well as language procurement.

The term "sensori-neural deafness" describes hearing loss created by ailments of the inner ear.

It's called conductive hearing loss since it takes place when the center as well as outer ears of a typical internal ear are faulty.



This includes all hearing deficits that are triggered by a lack of regular auditory pathways that stream from the inner ear to brain interpretation locations.

An audiometer was used by Jerger (1980) and Okuoyibo (2006) to classify the degree of hearing loss in decibels (dB).

Either you have normal hearing, or you have light/medium depletion, or you have heavy/low attenuation, or you have a low loss.

To be considered deaf, a private must be seriously impaired in their hearing.

Situating youngsters that are difficult or deaf of hearing.

### **Identification**

When working with hearing-impaired people, deafness recognition is critical. Moms and dads and caretakers are the key sources of information for informal recognition. children have actually been found to have (Webster 1986).

There are a couple of points to bear in mind: a) The youngster might have instructional concerns; b) The youngster may reveal indications of linguistic issues; c) The kid can ask for the declaration to be repeated at any time.

One or more of these qualities may exist in your kid.

An audiologist should conduct an audiological evaluation onyou.

### **Placement in a school.**

The traditional college is the very best option for a kid who is difficult or deaf of hearing considering that they can learn together with their peers. This is a technique of mixing two or even more suggestions with each other. Inclusion, the maximum level of combination, is what we're speaking about today. Regardless of the truth that we have a system of set apart schools. Partition indicates that kids who are deaf or tough of hearing participate in institutions that are solely for those with hearing disabilities.

In addition, there are methods for advising the deaf:.

Dental approach: just for the hearing impaired, this includes training and also making use of the language.

Utilizing this approach, American Indication Language (ASL) is taught as the key language, as well as written English is shown as an additional language.

In this approach, both verbal and nonverbal signs are made use of. This strategy makes it practical for the young person to reveal himself in the simplest and most effective way.

Handwriting and characters are utilized to communicate with those that are hard or deaf of hearing. Speech is not permitted in this procedure.

Applications for the Deaf in the Class.

- Students with hearing problems need to be seated together to make sure that they can see each other talk.
- See to it visual tools, such as overhanging projectors as well as whiteboards, have appropriate illumination.
- In order to limit class sound, you should be aware of it.
- Maps and balloon representations can be utilized to show basic concepts.
- Take into consideration utilizing known principles and concrete items whenever feasible.
- If you desire the learner to profit from your lip reading, do not speak too promptly.

When you are talking, - You must keep your hand away from your face.

- When giving directions, use personalities or fingerspelling to motivate pupils to check out the language.
- When talking to a pupil, avoid drawing them back. Stay away from the board when you're speaking.
- For students that are tough or deaf of hearing, assistive modern technology tools, computeraided guideline (CAI), digitizers and speech synthesizers, along with talk interaction gadgets for the deaf, are all options.

-

## **PUPILS WHO HAVE TROUBLES COMMUNICATING**

Disabilities in the ability to interact through speech or language are understood as interaction problems. Prior to you can totally comprehend the principle of communication, you need to initially comprehend what it is. A transmitter and also a receiver are required for communication to occur. As part of the communication, the sender must communicate a message that the recipient can analyze. If the recipient correctly decodes the sender's message, interaction happens: When a recipient is unable to properly decipher a message sent by the sender, it indicates that the communication was unsuccessful.

Consequently, the recipient need to utilize their eyes, ears, or even their touch (like Braille customers) in order to understand the details. There are numerous methods to communicate, including spoken or nonverbal communications (such as a hand gesture) along with the exchange of sensations and also suggestions (Smith, 2007).

People who have speech problems have irregular language that is either incomprehensible to others, distressing, or impedes communication. If a person has difficulty with articulation, voice, as well as fluency, they might have language difficulties.

### **Disorders of Speech.**

There are problems with the way individuals speak and also the means they utilize it. This can have an influence on how individuals communicate with others in several various setups. Specials needs in the manufacturing of speech audios, fluent speech, as well as the manufacturing of the voice are all examples of speech disorders.

	Definition	Description	Examples	Treatment
<b>Articulation Disorder</b>	An inability to produce a perceptually acceptable version of particular phonemes, either in isolation or in any phonetic context.	Single speech sound distortions, errors, or omissions	/r/, /s/, /l/	1. "Traditional Artic"/motor-based approaches 2. Van Riper approach 3. McDonald's sensory-motor approach 4. Multiple-phoneme approach
<b>Articulation Disorder due to Structural Anomaly</b>	Low intelligibility that is the result of or compromised by atypical physical development	Unintelligibility caused by a structural aberration.	Cleft Lip and Palate VPI Crouzon's Syndrome Hearing Impairment	1. Increase Vowel Repertoire 2. Increase Consonant Inventories 3. Increase Sounds in Context by building Vocabulary 4. Increase Oral Airflow 5. Decrease use of Nasal and Glottal Sounds
<b>Delayed Phonological Acquisition</b>	A phonological system similar to younger, normally developing children. Most phonemes can be articulated; however, there is a discrepancy between the processes observed and the child's age.	Developmental processes (errors) that you would expect to hear from a young child are still present at a later age.	Cluster Reduction Stopping Liquid simplification Fronting Weak Syllable Deletion Final Consonant Del.	Pattern-based approaches 1. Phonologically based intervention e.g., Cycles 2. Distinctive Feature approach
<b>Consistent Deviant Phonological Disorder</b>	Systemic use of deviant phonological rules (i.e., error patterns that are atypical of normal phonological development).	Errors that you would not expect from a child of any age are present and consistent.	Initial Consonant Del. Backing Denasalization Palatalization Metathesis	Phonologically Based Intervention Phonological Awareness
<b>Inconsistent Deviant Phonological Disorder</b>	Variable productions of the same words or phonological features in the same contexts and across contexts.	Longer, unintelligible statements that vary with each new attempt. There is no or very little consistent pattern.	Child's utterances are typically many words long Say "butterfly" "Chutterdy" Again, say "butterfly" "sunnerny"	1. Achieving consistency is paramount. Establish consistent productions at any level and build their consistency up to the word level. 2. Example of therapy approach: Core vocabulary (that focuses on consistency of whole-word production)

www.bilinguistics.com copyright 2010

Conditions of language as well as their hidden reasons.

1- Mind injuries.

- Loss of the ability to listen to.
  - Causes that are given by means of the generations
- 2- The atmosphere (non-stimulating environment).

Signs and symptoms and characteristics of many kinds of language problems.

It is difficult for the child to communicate his or her requirements in words due to the fact that she or he: Is incapable to rhyme;

Is unable to adhere to spoken instructions; Has a limited vocabulary;

Troubles with fluency.

Poor, jerky, or unnaturally halting speech can be indicative of a problem with temporal speech problems. Stammering as well as various other types of difficulty in

speech are symptoms of fluency conditions, which are defined by hesitancy and duplicating of areas of words that disrupt the all-natural flow of speech. You ought to understand that stuttering can be obtained or passed down using households. Techniques to Training and Understanding.

Specific tactics need to be used in order to boost the classroom setting and help students in improving their language abilities. The techniques listed here can be used.

There are two kinds of training aids:.

- a) An environment that is language-sensitive.
- b) Explicit language guidelines.

Mentor aids, and a setup that is linguistically receptive.

## **EDUCATION FOR INDIVIDUALS WITH WELLNESS, PHYSICAL.**

Physical and Psychological Impairments. Definition.

Handicap is a term that describes a condition that impairs a person's capability to utilize their body. The majority of these health problems impact the neurological, muscular, or skeletal systems and have a small, moderate, or serious effect on movement and also motor skills in the bulk of instances. On the various other hand, health disability is a problem that influences the inner body organs and also blood and also demands ongoing clinical treatment (Kirk Gallagher and Anastaswoo, 1997). Physical impairment is classified into 2 groups:.

- i) Neurological Problems as well as (ii) Musculoskeletal/Skeletal Problems.

Analytical Palsy Numerous Sclerosis Muscular Dystrophy Polio Seizures Spine Problems Limb Deficiency Juvenile Arthritis Skeletal Disorders. Spastic paralysis is a condition, not a condition. It is a deadly problem caused by a scarcity of oxygenated blood in the mind. Particular kids with spastic paralysis just demonstrate improvement when extreme physiotherapy is combined with surgery. ii) Cerebral Palsy: Reasons and also Signs And Symptoms.

Analytical palsy can be triggered by any of the following: Infections, health problems, poisonous substances, excessive X-ray direct exposure during pregnancy. Forceps usage, high temperature, hypoxia, analytical bleeding, oxygen deficiency, and straight mind trauma.

Spastic paralysis is categorized into the complying with groups:

- ( a) Hemiplegia: a condition that influences one-half of the body (right or left).
- ( b) Diplegia: this problem influences the legs more than the arms.
- ( c) Quadriplegia: influences all 4 arm or legs. ( d) Paraplegia: influences only one leg.

Various other difficulties of spastic paralysis consist of spasticity, which is defined by muscular tissue rigidity or tension and inaccurate volunteer movements.

Multiple Sclerosis is a typical chronic condition in grownups that creates the myelin sheath that borders the nerve fibers in the mind as well as spinal cable to degrade, protecting against electrical impulses from the brain to other areas of the body from being transmitted. Although incredibly uncommon, muscular dystrophy is a problem that deteriorates and eventually damages the damaged muscular tissues. Seizures: Epilepsy is one of the most regular neurological disorder in kids. It is a type of recurrent seizure produced by aberrant mind electric activity. Epilepsy clients experience frequent seizures.

Causes.

Seizures can be caused by a range of different kinds of brain damage, including a lack of oxygen (hypoxia), reduced blood glucose (hypoglycemia), infection, or physical injury.

Spina bifida is a neural tube problem or spine anomaly triggered by a disruption in beginning growth; it is a congenital condition in which the meninges that border the spine protrude outward (Ladipo, 2006). Poliomyelitis is a viral infection that leads to paralysis. When the infection effectively kills the spine cells, it incapacitates the reduced extremity muscles. A fever, distressing muscle mass cramps, and the failure to relocate the affected limb are all feasible indications. Muscle/ skeletal: Conditions are exceptionally common in kids; this manifests itself in limb shortages, adolescent, and also robot arthritis. Limb deficiencies refer to the inability of the legs or arms to function correctly, causing mobility concerns, whereas juvenile joint inflammation is a severe and painful muscle disease that happens in kids that use sophisticated gadgets to perform electric motor abilities dubbed "robotics."

There are 2 types of health and wellness handicaps. These consist of the following: i) Long-Term Illnesses.

ii) Viruses as well as Infectious Diseases.

Asthma, cystic fibrosis, diabetes mellitus, genetic heart issues, consumption (TB), pediatric cancer cells, as well as blood ailments are all examples of chronic conditions.

HIV & AIDS, Liver Disease B, and It deserves keeping in mind that disability has no regard for color or age. Nonetheless, it is preventable if the following actions are taken.

a) Appropriate health; b) Proper prenatal education; c) Injury avoidance; and also d) An Universal

### **Disabilities in understanding.**

Definition: Learning impairment are conditions that hinder an individual's ability to procedure, examine, and also store expertise. People with discovering problems have regular or aboveaverage intelligence yet battle with discovering. If interfered upon at an early period, they possess an inherent capability for discovering. Learning impairment can be small, modest, or serious; people with finding out impairments show a variety of staminas and limitations and also are present in virtually every classroom. Nothing physical suggests a learning impairment, as well as the majority of

individuals with the disease are not recognized until they get to the point of frequent failing in school. It is important to remember that not all discovering difficulties are identified with intellectual special needs.

The Education for People with Disabilities Act (2004) defines a finding out special needs as a disturbance in several of the basic emotional processes associated with using or understanding talked or written language, materialized by a lack of ability to listen to, think, talk, check out, create, lead to, or carry out arithmetic, and consists of problems such as cognitive conditions, mind injuries, very little mind dysfunction, dyslexia, as well as developing aphasia.

Smith (2004) defined finding out problems as a void between what a child need to learn as well as what she or he is capable of learning. Factors that add to learning disabilities.

No one is entirely particular of the reason for finding out problems. Today, the majority of reasons are established on feelings as well as assumptions. Reaction and also psychological health problems. According to Smith (2004 ), Kirk, and also Gallagher (1989 ), possible root causes of the disease consist of moderate mind injury, not enough schooling, inherited factors, as well as architectural variants in the mind, compound abuse, and also malnourishment.

### **Attributes of children with intellectual Disabilities.**

Messina and also Messina (2004) recognized a number of differentiating features that can be used to recognize preschool youngsters with discovering problems. These youngsters, they assert, speak later than the majority of children. i) They have trouble with enunciation.

ii) They develop a minimal vocabulary and often have a hard time to locate the ideal word. iii) Lack of passion in story. iv) Problem finding words that rhyme.

v) Trouble acquiring knowledge of the numbers, alphabets, days of the week, shades, and forms.



- vi) Have a bad recall for regimens and are promptly sidetracked.
- vii) Have problem sitting still Having troubles finishing points Having difficulty connecting with schoolmates Having difficulty adhering to instructions or routines.
- viii) Are creating fine motor abilities gradually Battle to grasp self- help abilities, such as connecting shoelaces Are clumsy Program unwillingness to draw or map Have troubles checking out from delegated right.

Additionally, experience and also monitorings indicate that kids with discovering disabilities display the adhering to features: inadequate memory, bad spelling, bad handwriting, and inadequate reading.

The fact that a person has one or even more of these attributes related to finding out troubles does not suggest or indicate that the person has learning disabilities. remains in presence.

Intervention in the instructional system for children with finding out problems.

Treatments with kids that have learning troubles can be exceptionally demanding. Educational therapies differ according to the certain characteristics of persons influenced. In a class of twenty students with learning handicaps, the trainer might need to prepare twenty different programs; these pupils might have varying levels of trouble with analysis, composing, punctuation, and arithmetic, as well as what works for one child might not benefit one more. Steele (2005) argued on behalf of the preceding concept that making lesson and educational program decisions depending upon the specific child results in teaching that causes learning problems. Whatever educational intervention is planned for youngsters with learning difficulties, an Individualized Education Program (IEP) is needed. Individualized Education Programs (IEPs) are tailored per youngster's particular requirements. Educational treatment entails a detailed approach and ought to be started early and intensively. Kids with difficulties of discovering should be consisted of. Periodically, these kids obtain no benefit. Learning disabilities are dealt with by unique education trainers, general education and learning educators, as well as professionals in the area of unique education.

## **Education for the Gifted and also Talented**

### **The Principle of Giftedness**

Considerable Points Many interpretations of giftedness have actually been recommended. They differ according to their conservatism or liberalism; their one-dimensionality or multidimensionality; as well as their emphasis on potential or success. One reason for the diverse interpretations is that advocates look for a "genuine" interpretation due to the fact that manifestations of aptitude vary throughout time and civilizations. Therefore, it is improbable that a solitary interpretation of aptitude will certainly be approved all. However, the breadth of meanings can give a holistic understanding of skill and lead to areas for future investigation.

### **Giftedness Defined**

According to Davis as well as Rimm (1998: 17), "specifying aptitude as well as skill is a difficult and also crucial issue: our interpretation has implications for those we identify as talented as well as for our program or curricular choices." The tag we designate youngsters can have a favorable or adverse impact on their self-worth, self-perception, and also interactions with family and schoolmates (Danis and Rimm 1998). McAlpine (1996) observes that interpretations differ according to their preservation or liberalism, one- or multi- dimensionality, and also focus on possible or performance.

Liberal versus Conservative. The traditional interpretation has a tendency to restrict the domain names of aptitude and also the variety of gifted individuals (Renzulli 1986) - for instance, the leading 5% of a certain ability level. These interpretations constrain aptitude to a certain characteristic, such as high knowledge (as reviewed by an intelligence examination). On the other hand, liberal meanings assert that there are no noticeable differences in manufacturing in between the top 35% as well as the 1015 percent, who fall just below this intelligence limit as well as for this reason represent approximately 1520 percent of the population in 1982; Renzulli 1982).

One-dimensional versus multidimensional While some interpretations focus solely on academic performance, others include a series of accomplishments. A legitimate desire to avoid excluding really exceptional individuals. H. is thought about remarkable in the exact same method that I am (Runco 1993).

Efficiency vs. Possible. While some definitions demand evidence of abilities, others identify low-performing persons as gifted, also if they lack outstanding capacities in daily contexts.

Lastly, Sternberg as well as Davidson (1986: 3) statement that "ability is something we produce, not something we uncover; it is what several societies need." Just like any trait that differentiates dazzling trainees from regular pupils, we develop the group "aptitude" statistically by figuring out where the distinction between "giftedness" and ordinary abilities need to be made in order to manage innovative students. In various other words, our meaning is political in addition to psychological in nature (Sapon Shevin 1994). We must temper our assessments of kids's skills as well as demands as well as be mindful of the frameworks and also methods that govern our technique.

### **Gifted Pupils' Characteristics**

Any kind of youngster that has the bulk or all of the five attributes listed here is most likely to be talented.

1. Acquire brand-new expertise quicker as well as at a more youthful age than senior peers.
2. They will constantly remember what they have learned, obviating the need for rep.
3. Is qualified of managing problems that are also tough and also abstract for senior colleagues to understand.
4. If they could, are passionate concerning one or more subjects and would certainly commit all available time to researching even more concerning them.

5. They are not required to look at the teacher in order to hear what is being claimed; they can operate lots of mind channels simultaneously as well as process different jobs simultaneously. KEEP IN MIND: It is quite rare to uncover a child that is "talented in every location." Most of gifted young people master 1 or 2 areas as well as are average and even below par in others. As an example, numerous very etymological teens show up to do not have body kinesthetic capabilities, specifically in athletics or athletics programs.

#### Programs for the Gifted and Talented in Education and Administration:

The monitoring of a gifted program is essential to its success. Certainly, it is critical to the success of any type of talent sponsorship. According to some experts, the gifted are carried out through 3 distinct management regimes: ability groups, acceleration, as well as enrichment (Clark 1983; Adesokan, 1990).

Clark (1983) and Adesokan (1985) documented the adhering to diverse kinds of skill collection (1990 ).

a) Standard Classrooms and Standard Classrooms with Collections: In this environment, gifted as well as non-gifted students are blended with each other in a conventional class. It is the least proper company for talented pupils because it is based on group guideline or rigorous educational program. Guideline supplies a regular experience for all participants. "It shows up most likely that future research will certainly show that the typical class is one of the most limiting setting for the fantastic child," Whitemore (1986) stated. This is owing to the curriculum's typical nature. To function properly, gifted as well as talented pupils require a flexible and also vibrant curriculum.

b) Traditional classroom with Pull-Out

Right here, regular schoolchildren are matched with gifted pupils, yet have the possibility to exchange suggestions with other talented students for a part of the day. Furthermore, they get accessibility to the resource space, an unique course, an

expedition, in addition to workshops as well as various other one-of-a-kind academic chances. The drawback of this atmosphere is that talented children are required to service a consistent basis during their lack. In addition, the removal time wants to cover every one of the pupils' academic demands. Routine educators are also sometimes interrupted by pull programs.

c) Regular class with pull-outs and also clusters: Talented students are organized with various other pupils and have higher opportunities to get in touch with gifted peers. As a result, the talented program obtains enhanced oversight. The program is taught by both substitute as well as permanent educators. In this setting, talented youngsters have to abide by the traditional educational program even when they are not there.

d) Personalized class: In this setting, each pupil's curriculum as well as materials are established through individual and also adaptable small team "analysis" sessions. The class is decentralized, and you have accessibility to a selection of other settings of guideline. These courses are regularly supplemented by trainees of every ages, as well as the learning facilities are often found in the very same classrooms. When there are just a few, the drawback is that gifted pupils are often private and not able to connect their thoughts with others. It requires the work of particularly qualified and qualified teachers in order to stop the problem of architectural deficiency.

d) Customized class with collection: Right here, kids have accessibility to a variety of modes of direction; they also have the possibility to work together with other gifted trainees. Despite having small group instruction, the setup is adaptable. It is unorganized and disorderly without the support of a great teacher.

£) Individual Class with Teams as well as Pull Out: Offers the versatility of individually tuition in little teams, with analysis utilized to develop curriculum and sources for each pupil. Numerous types of discovering experiences are available. Added materials are given to both pupils designated to the common educational program and those in the pull-out class.

- g) Unique class with certain incorporated courses: The layout is subject- based, with the advantage of consisting of gifted topics into integrated courses. Pupils who are gifted in this medium gain a recognition for various other abilities, which is extremely helpful for the moderately gifted. To reduce chaos, the setup demands the services of properly certified instructors.
- i) Special class: The setup is incredibly valuable to the talented student's learning style, as it is specifically adapted to their academic demands. Furthermore, there is the benefit that the environment's adaptability in all locations presses individuals to reach their biggest capacity.
- j) Special school: Is primarily used for gifted and intense students, and so the solutions of particularly educated educators are critical. The setup fosters gifted individuals' capacity; the primary adverse is that talented trainees are segregated from their peers. The gifted would finish up working together with the bulk of culture's students. In Nigeria, an instance of such a school is the Suleja Academy, where the concentration of bright children certifies as a special institution.
- k) Unique group: Gifted pupils can join this program as an after-school or summer season task. Trainees' experiences vary from specific single- interest group or seminars focused on a solitary based on an open as well as vast approach. Using it as a program to urge talented individuals has downsides, as it does not consider the distinct discovering needs or interests of individual pupils; also, the program does not have connection; however, it is proper when used as an enrichment in a typical context. The grouping of skills can just attend to a section of the learning needs of talented kids; added changes in any way levels of education are required for the program to be effective. Due to the truth that this team of children is likewise one-of-a-kind, guidelines ought to be integrated right into their childhood. As an outcome, all aspects of intellectual working must be cultivated. On the various other hand, overall partition should be stayed clear of, and very trained instructors should be given. Because of this, parents and also teachers must communicate, as their collaboration is important to the program's success.

## **Curriculum Adjustments for Gifted as well as Talented Trainees**

Gallagher (1994) also identified that gifted kids' basic curriculums can be changed in regards to content, procedure, and learning environment. (i.e., the physical and emotional surroundings), while Renzulli (1991) included a part to think about: item components (i.e., the end items youngsters get out of the approaches executed).

### **Adjustment of Material**

Curriculum material includes the suggestions, principles, descriptive details, as well as truths showed to pupils; it can handle a range of kinds and varies in level of abstraction, intricacy, structure, and thematic emphasis.

Abstraction: Discussions, readings, and also talks in a gifted program ought to focus on abstract ideas and generalizations - ideas that are suitable throughout techniques or areas of research or that are rollovered from one technique or field to an additional. The function of info as well as valid information is to offer as images or examples of abstract concepts, not to act as the primary emphasis. Intricacy: Aesthetically abstract concepts are likewise made complex, but their level of intricacy differs. When provided to talented children, abstract ideas need to be as made complex as possible. The problem of an abstract notion can be characterized by the number and complexity of its principles, along with the variety of traditional self-controls or areas of material that need to be understood or integrated in order to comprehend the suggestions. Diversity was the interpretation of enrichment in the previous year, as well as in lots of courses, the only web content adjustment readily available to talented pupils. The concept of diversity indicates that suggestions as well as material areas not covered in the standard curriculum ought to be included in an extremely gifted program. Economic company and also management

Because info advances and also advances at a quicker rate in the bulk of areas as well as gifted children have actually restricted time in school and also on the program, each finding out experience should be as advantageous as feasible. To attain economic climate, web content needs to be organized as if it assists the transfer of understanding,

memory, and comprehension of abstract concepts, as well as the development of generalizations. If the material is structured around the main ideas or abstract concepts to be communicated and also not in any type of other means, Bruner (1983) insists that these results are feasible.

### **Human Research study**

Talented trainees are more probable to turn into the future's most prolific and also creative leaders, characters, and scholars. In addition, they appreciate biographies and memoirs. Together with their capability to find out how to handle their own abilities as well as potential success, gifted trainees often examine productive as well as creative individuals. It was required to integrate an examination of these people's problems, along with their services, individual high qualities, expert or vocational functions, as well as social calls.

#### Methodological Evaluation

Trainees that are gifted ought to end up being knowledgeable about the examination procedures (inquiry methods) utilized by researchers from a number of areas. You have to obtain experience with these procedures and grasp a range of techniques. Such a level can aid trainees have a far better comprehension of the subject issue and increase their self-reliance.

#### Adapting the treatment

The procedure component of the curriculum involves the presentation of brand-new web content, student tasks, as well as the solicitation of inquiries. The procedure includes both the educational techniques and also the trainees' gotten skills or psychological procedures. Ideas at a Greater Level:

The gifted program's techniques must emphasize application instead of accumulation of product. Given their ability to get product quickly as well as almost effortlessly, talented students should be expected to utilize it in novel contexts in order to develop new goods.

Broad-minded:



Gifted questions and tasks ought to have a better percent of open-ended questions and also tasks, suggesting that there is no predetermined proper solution as well as that the inquiries or tasks are provocative in the sense that they elicit additional idea, consent, and participation from the youngster. as well as aid to the growth of a student-centered design of interaction.

#### Exploration

For talented youngsters, tasks need to entail a better percentage of situations in which pupils use their inductive thinking to reveal underlying principles, patterns, as well as concepts.

These kids gain from led discovery in different methods:

1. Regular involvement in.
2. It builds on their inherent interest, their drive to understand the "how and also why" of points (Renzulli, Smith White, Callahan, & Hartman, 1994), as well as their wish to organize and structure points.
3. Builds their confidence and freedom in discovering by demonstrating their capacity to address problems separately.

#### Argumentation evidence

Another essential modification to the process for talented youngsters is to need them to explain not only their verdicts, but additionally the reasoning that resulted in those verdicts. This element of training is particularly essential when utilizing a discovery approach, fostering higher-order thinking, and asking flexible inquiries. Pupils develop a distinctive idea process and also are motivated to evaluate both the procedure as well as the items of others using this approach.

Additionally, it allows the teacher to determine the students' level of thinking.

#### Optional flexibility

When possible, gifted pupils must have the freedom to select what to investigate and exactly how to research; this enhances their rate of interest and also exhilaration for understanding. Nevertheless, not all gifted kids are self-sufficient learners, and also

because of this, they might need aid with decision-making and decision-making.

Simulations and tasks entailing group communication:

Structured activities and also simulation games must be a required part of the skilled student curriculum to aid them develop their leadership and also social abilities. These activities must consist of sticking to a set of regulations, connecting with a tiny team of peers, and self- analysis or objection. Both peer judgment as well as self- evaluation are enhanced when the task is video clip or audio recorded. Rhythm as well as selection

The last two procedure enhancements are mostly indicated to assist in the success of succeeding modifications. The term "rate" associates with the rate at which brand-new products are supplied to students.

Diversification simply implies that the educator make use of a range of strategies to preserve the youngsters's interest and also to accommodate the students' differing understanding designs.

Item adjustment

The products are the handbook's "ends." They can be worldly or immaterial, complex or straightforward. Advanced items call for special and comprehensive labor, whereas basic products paraphrase or reproduce. When there is no offered target market, various other pupils can work as a stimulated target market. Reports, stories, plays, dancings, pictures, pictures, as well as suggestions are all examples of items. The end results prepared for of talented students

ought to be similar to those created by professionals in the areas being examined (Renzulli,1994). Expert outcomes might differ from those of regular pupils in the complying with means: Real problems: talented trainees' items must resolve concerns that are personal to them. Students should be offered the possibility to select from particular locations of worry within a specific subject of study and develop a research around that topic.

Real target markets: the goods created by gifted pupils ought to address real target markets, such as the scientific area, a government firm, or the city board; the learners

ought to not create items that are only seen or listened to by the trainer. If no genuine audiences are available, their peers may constitute a boosted audience.

Gifted items need to reveal adjustments of existing knowledge or information, as opposed to being merely recaps of the work of others. The collection and evaluation of raw information should belong of initial research, original artwork, as well as various other associated things.

They must achieve certain idea levels in order to produce a product that really changes. Evaluation: Frequently, trainee work is directed and examined only by the teacher. Specialists' products are rated according to the target groups for which they are intended. The outcome of gifted students must be reviewed by an ideal audience, which might consist of a fictitious peer target market. Furthermore, they must be urged to do a comprehensive self-assessment of their own products.

### **Visual disability qualities**

- Vision loss or problems can cause developing delays or impairments in motor, cognitive, as well as functions. Without aesthetic cues, a newborn might be disheartened to get to for and move towards things of passion in the setting. Once the visually impaired newborn discovers that hearing an audio is thrilling, she or he begins getting to for as well as relocating on items in the location, which occurs a number of months later on, as hearing audios do not motivate things as promptly as things indicate.
- Trouble detecting things that are out of reach of the child, such as those that are also large or as well small, or that action. While the child can get info about the atmosphere through making use of added detects, there is a cognitive constraint on the range and range of experiences.

A visually challenged youngster has little communication with his/her setting from a social standpoint. The youngster is not able to perceive his schoolmates, teachers, and moms and dads' face expressions; he is incapable to design social conduct with imitation; as well as he is often ignorant of the presence of others unless a sound is

made. While touches convey direct details, they are frequently seen socially unwanted. The older youngster has a restricted ability to self-orient and wander easily in action to environmental forces.

### **Strategies and Considerations in Education and learning**

Given the group's details qualities, parents as well as teachers need to emphasize the kid's active engagement in all tasks, as children with visual problems may be unable to learn by monitoring. They must acquire understanding with "doing" as well as communication with their atmosphere. Interventions need to prioritize the advancement of the very young infant's emergency awareness and psychological and also inherent motivation, as well as the advancement of the child's physical abilities required for movement. Aesthetically impaired youngsters should be able to take part in any activity they can uncover. Consider exactly how the task can assist them in getting involved and doing developing tasks if a youngster is not able to participate independently.

Braille is a system of communication included raised dots that is sensed with the feeling of touch (sense of touch). As a result, it is essential that aesthetically impaired young people get suitable training in this location. Louis Braille created the Braille system in nineteenth-century France.

Slate as well as Stylus: This is a means of braille writing in which the paper is held in a slate as well as an indentation is made in the paper making use of a stylus pressed with an aperture.

Listening capabilities: these are essential in the lives of youngsters with visual problems. Paying attention allows the aesthetically impaired to understand certain things such as audio pets, automobiles, floods, or traffic. Hearing abilities help vision challenged individuals in flexibility and also direction. It is important, as a result, that kids with aesthetic problems receive an appropriate education.

Flexibility and also Orientation: It is important to be able to move gracefully and to be aware of one's surroundings. Visually tested youngsters should be learnt wheelchair and positioning in order to relocate. This may include making use of a cane or a lengthy cane, in addition to overview pet dogs or human overviews.

#### Technological Help

There are numerous technical devices available to help aesthetically damaged individuals in learning. Among these devices is the Kurzweil 1000, while others are computer system systems (using JAWS) software application.

### **Definition of Recovery of the Visually Damaged**

Rehab is a practical component of special education and learning that concentrates on taking full advantage of impaired people' physical, psychological, and specialist abilities.

#### Aesthetically Damaged Individuals and Vocational Training

The human eye is crucial in all that we accomplish. Generally, the perception most of sectors is that a person that has lost their vision has come to be purposeless and inefficient. Nonetheless, in the area of unique education, this concept is false, as Obani (2003) states, "there are no disabled people; there are only those that are disabled as an outcome of society's poor assumption, unfavorable attitudes, and reluctance to approve people with unique demands."

### **Rehab Programs of Different Types**

The adhering to categories relate to recovery programs for kids with phenomenal requirements.

#### a) Corrective emotional solutions

When a kid is licensed clinically blind, an immediate response and also reaction from the moms and dads and instant family members are unavoidable. Separation or separation. Because of this, it is crucial for moms and dads to recognize themselves. Parents must be trained and trained on how to increase aesthetically damaged children.

#### b) Rehabilitation Medical

This is a clinical group. In addition, it encompasses all clinical products and solutions offered to blind individuals following their identification and accreditation as visually impaired. Physicians suggest such people to experienced eye doctors for appropriate medical diagnosis, as they have the legal authority to accredit a blind individual.

c) Rehabilitative Education

If the clinical component of rehabilitation does not lead to an ophthalmologist remedying the child's vision, an ideal curriculum should be applied to protect against the young person from becoming a worry in life. Blind youngsters need to start their education in kindergarten, where they are exposed to finding out and various other everyday regimens such as dressing, making use of the toilet, cleaning their teeth, showering, cleaning, as well as eating. Following preschool, the youngster is left at primary school. Secondly is additional education, which consists of leisure and also assistance solutions for blind children in the facility's resource area to supplement the job of the class instructor.

Obviously, the blind kid that masters senior high school scientific research has the selection of going to university. Blind trainees can attend colleges, polytechnics, and also professors of education and learning, amongst others.

d) Community-Based Rehabilitation (CBR) is a principle that assists people with aesthetic disabilities in restoring themselves in their natural surroundings. Area rehab can be identified as "an idea that engages the entire area, utilizing area sources to improve the disabled's criterion of living, including their family members, as well as additionally offers as a means of incorporating people with handicaps into their areas."

### **Recovery Employee**

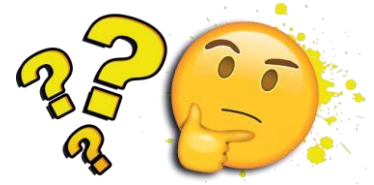
The complying with people are crucial gamers in the rehabilitation of aesthetically impaired people.

a) Recovery Educators: Rehab teachers guidance blind students and their moms and dads on exactly how to adapt to loss of sight. Additionally, it guides the blind to a specialized area where they can obtain the important abilities.

Recovery counselor; The relevance of a therapist at a recovery center can not be overstated. The therapist aids children with special requirements in getting over challenges and readjusting to their new environment. According to Olukotun (2003 ), parents of youngsters with special requirements endure a number of mental, social, financial, and also emotional troubles as an outcome of their living problems.

### Assignment

Discuss the difficulties that schools in your nation face in implementing inclusive education.



### References

J. F. Cawley, R. S. Parmar, T. E. Foley, S. Salmon, and S. Roy (2001).



Students' arithmetic ability: Implications for standards and programming. *Children with Disabilities*, 67, pp. 311–328.

L.W. Heward (2004). *Children with Disabilities: An Introduction to Special Education* 7th ed., Merrill Prentice Hall, Ohio

T.O. Obani (2004). *Disabilities, handicaps, and special education. What Parents and Teachers Are Inquiring About.*